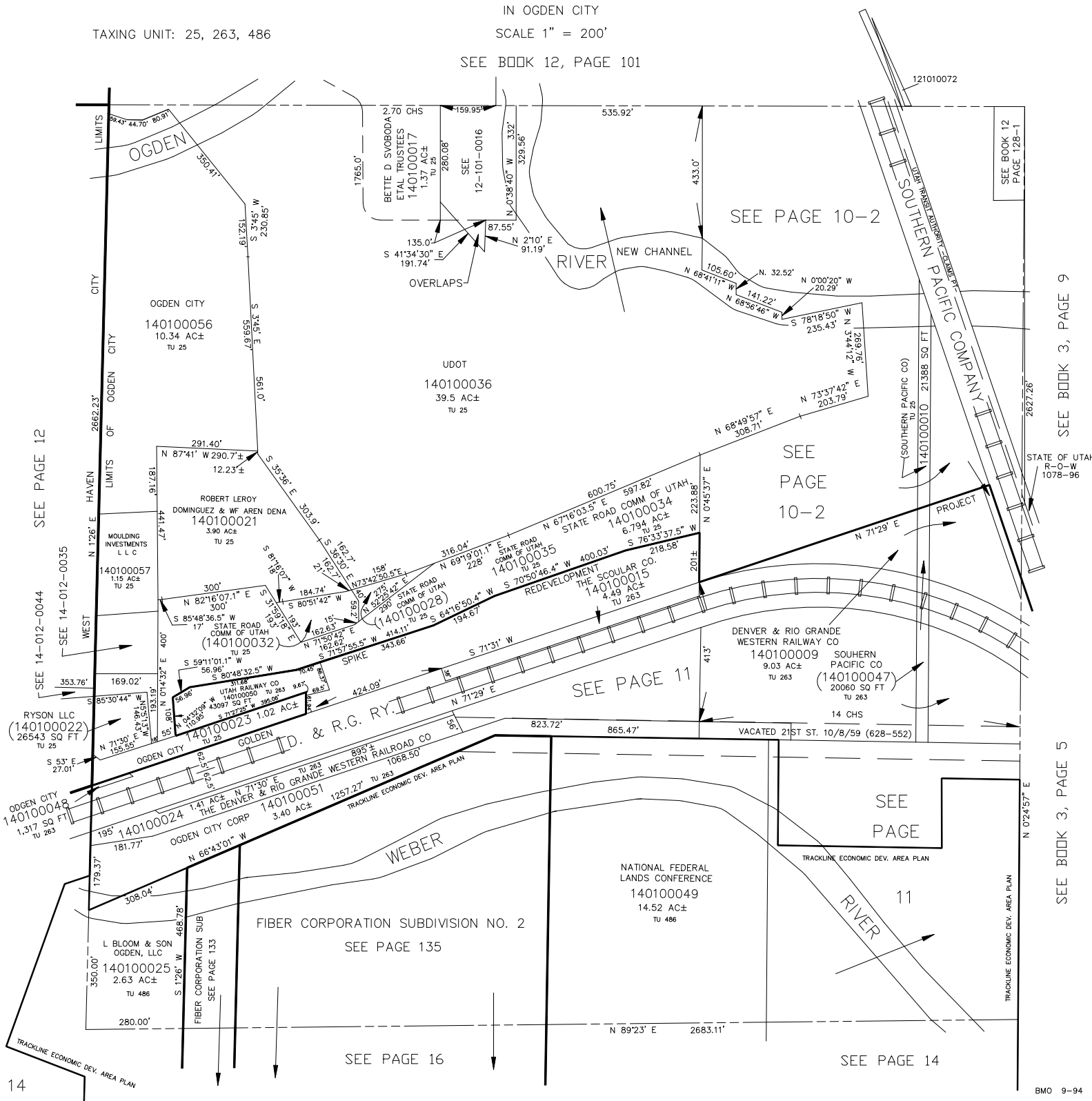


N.E. 1/4  
SECTION 30, T.6N., R.1W., S.L.B. & M.

IN OGDEN CITY  
SCALE 1" = 200'

TAXING UNIT: 25, 263, 486

SEE BOOK 12, PAGE 101



SEE PAGE 12

SEE PAGE 12

SEE PAGE 12

SEE PAGE 12

SEE PAGE 12

SEE PAGE 12

SEE BOOK 12  
PAGE 128-1

SEE PAGE 10-2

SEE PAGE 10-2

SEE PAGE 11

SEE PAGE

SEE PAGE 13

SEE PAGE 14

SEE BOOK 3, PAGE 9

SEE BOOK 3, PAGE 5